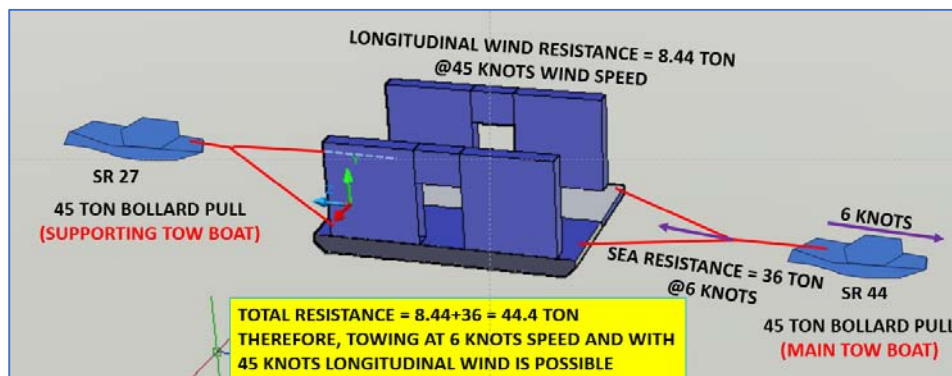
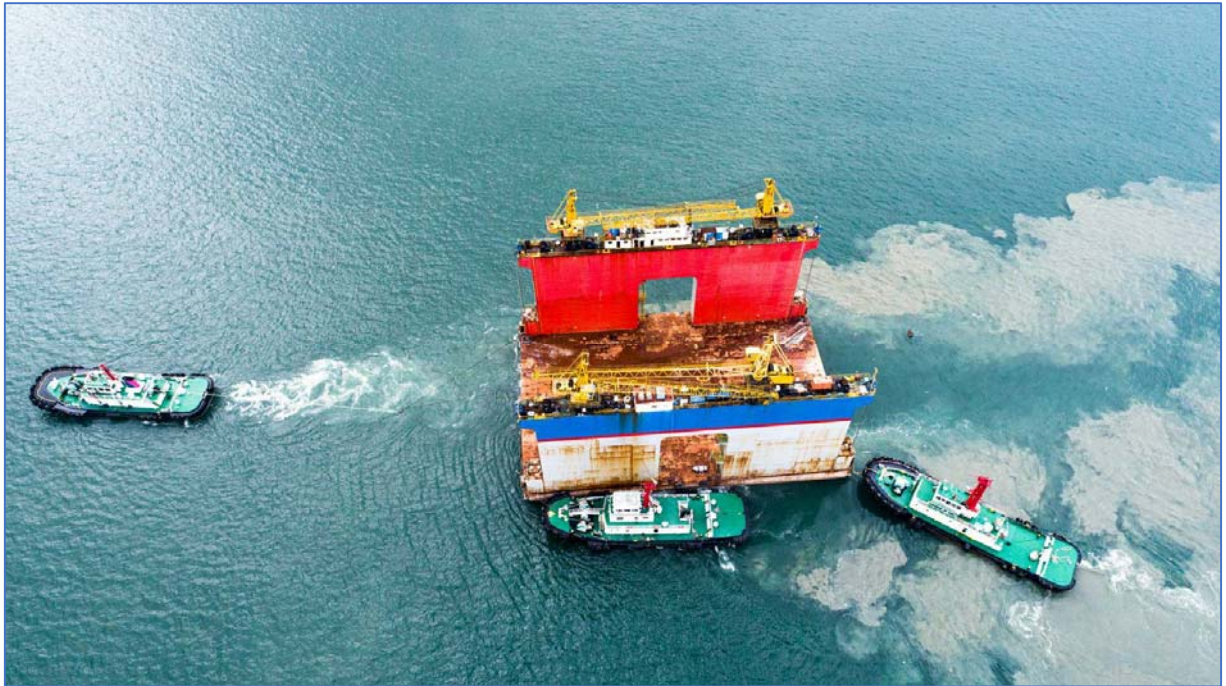


24th May 2025

MARINE NEWS NO. 4 – Utilization of Floating Dock for Ship Repair

The chief Naval Architect from Navis Consult joined the team from Sriracha Tug Boat Co., Ltd. and Chinathai Communications Construction J.V. to inspect a floating dock being used for port construction at Map Ta Phut Industrial Port, Rayong aiming at mobilizing the dock to Sriracha Tug Boat Terminal for future uses. Finally, the dock was safely towed to the terminal, and more proper mooring system is being provided.







Floating Dock Specifications Vessel Type:

Floating Dock Length: 62.0m
Breadth: 42.0m
Depth: 27.5m (loaded)/4.5m(empty)
Draft (Full Load/Empty): 4.2m/1.2m
Maximum Submersible Draft: 26.5m
Maximum Lifting Capacity: 7,000tons
Maximum Internal Width: 34m
Year Built and Location: 1993, Japan

This floating dock is suitable for repairing and constructing vessels with a width of up to 31m.